



## FLAMMABLE GAS SAFETY KITS FOR MUFFLE FURNACES KG 100



**Definition:** Flammable gas safety kit for muffle furnaces. Compact and safe pack to pilot protective gas inlet, while using metal muffle furnaces for thermal treatment with flammable gas. Ideal for RetroFit and safety compliance to the latest standards of old installations.

**Construction:** Built in 2 parts. The gas safety unit includes the control, the electrical and pneumatic equipment and the burner which is fitted on the retort or on the muffle by sealed connection with a 10 mm diameter tube.

**Electricity:** Voltage 230 V, frequency 50 Hz, power rating 200 W (400 V available on request).

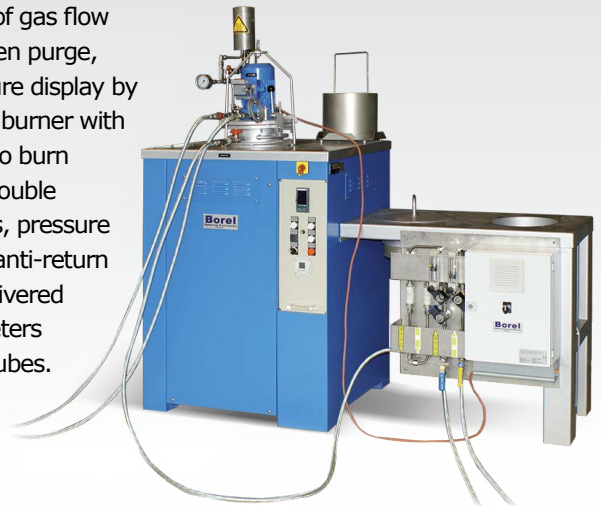
**Documentation:** CE marking and operating instructions in English.

**Type of gas:** Nitrogen, hydrogen or gas mixture: forming gas, cracked ammonia.

**Safety equipment:** 1 programmable controller, adjustment and display of gas flow rates, nitrogen purge, retort pressure display by manometer, burner with lighting coil to burn outlet gas, double safety valves, pressure relief valve, anti-return valve. All delivered with 2x3-meters gas supply tubes.



Photos for illustration purposes only



MODEL	ITEM CODE	For old SOLO furnaces	For old BOREL furnaces	Weight (kg)
KG 100-C Gas safety kit for retort/muffle of 4 liters	N15223C	-	Cube 400	30
KG 100-S Gas safety kit for retort/muffle of 4.5 liters	N15223	221-15/25	4.5/650S	30
KG 100-M Gas safety kit for retort/muffle of 12.5 liters	N15223M	221-15/35	17/650M	30
KG 100-L Gas safety kit for retort/muffle of 48 liters	N15223L	221-15/50	48/650L	30